

Half-Scale Cap Sleeve Sheath Dress

This dress fits the half-scale paper or stuffed dress forms I designed. The patterns to make the dress forms are available in my [Etsy Shop](#). This dress fits a form that measures approximately 17 7/8" (45.5 cm) at the bust, 13 3/4" (35 cm) at the waist, 18 1/8" (46 cm) at the hip, and has an 8" (20.3 cm) back neck to waist measurement.

If you have a doll with an adult female figure, you may be able to scale down this pattern to fit it. I suggest determining the print scale based on the bust measurement. For example, if you have a doll with a 12" (30.5 cm) bust, print the pattern at $12 \div 17.875 \times 100\% = 67\%$ (or in metric, $30.5 \div 45.5 \times 100\% = 67\%$). After you reduce the pattern, you will need to re-draw the seam allowances to get them back to 1/4" (6 mm). The center back seam allowance should be 3/4" (1.9 cm) measured from center back.

Materials

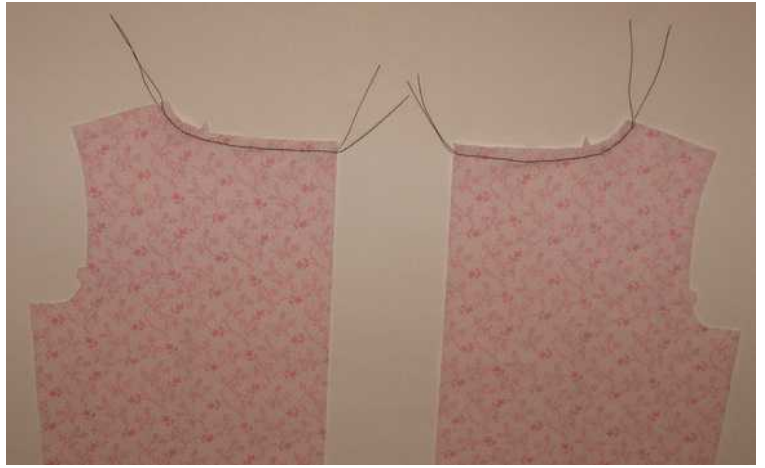
- 5/8 yard (0.6 m) woven fabric
- 1/4 yard (.15 m) lightweight fusible interfacing
- Hook and loop tape (Velcro)
- 2 1/2" (6.5 cm) piece non-stretch ribbon (or cut a strip from the fabric selvage)

Instructions

1. Print pages 11 through 15 of this document on 8 1/2" x 11" or A4 size paper. Print the pattern from a pdf reader such as Adobe Acrobat Reader, not a web browser. Print at 100% of normal size (or set the page scaling to "none"), unless you are scaling down the pattern.
2. Tape sheet 12 to 13 and 14 to 15, cutting on the borders and matching alignment marks. Cut out the individual pattern pieces.
3. Fuse interfacing to the wrong side of a piece of fabric (block fuse) before cutting out the front and back neck facing pieces. Cut the dress pattern pieces out of fabric.



4. Staystitch $3/16$ " (4 mm) from the neckline edge on the dress back piece. Use small stitches and do not backstitch.



5. Staystitch $3/16$ " (4 mm) from the neckline edge on the dress front piece.



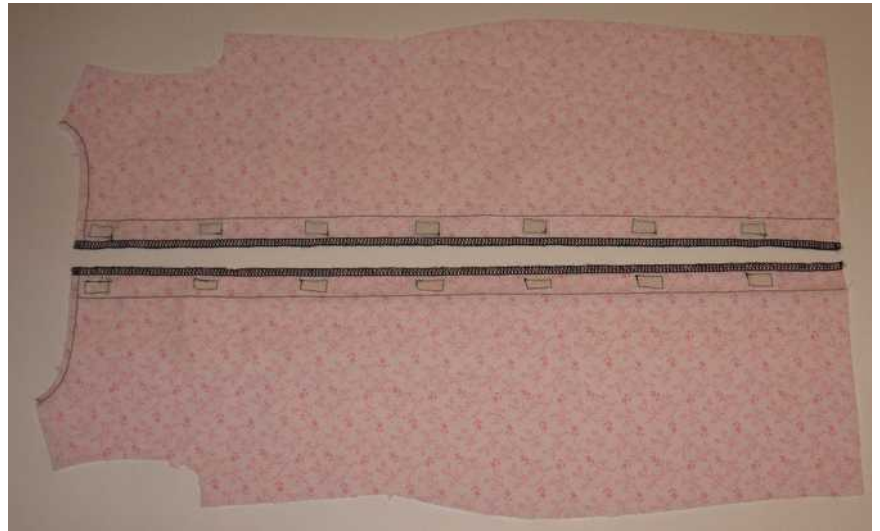
6. Stitch along the center back of both back pieces $3/4$ " (1.9 cm) from the edge. Finish the back edges.



7. Press the dress left back to the inside along the stitching line, rolling the stitches just to the inside. After the crease is set, open the fabric back out.

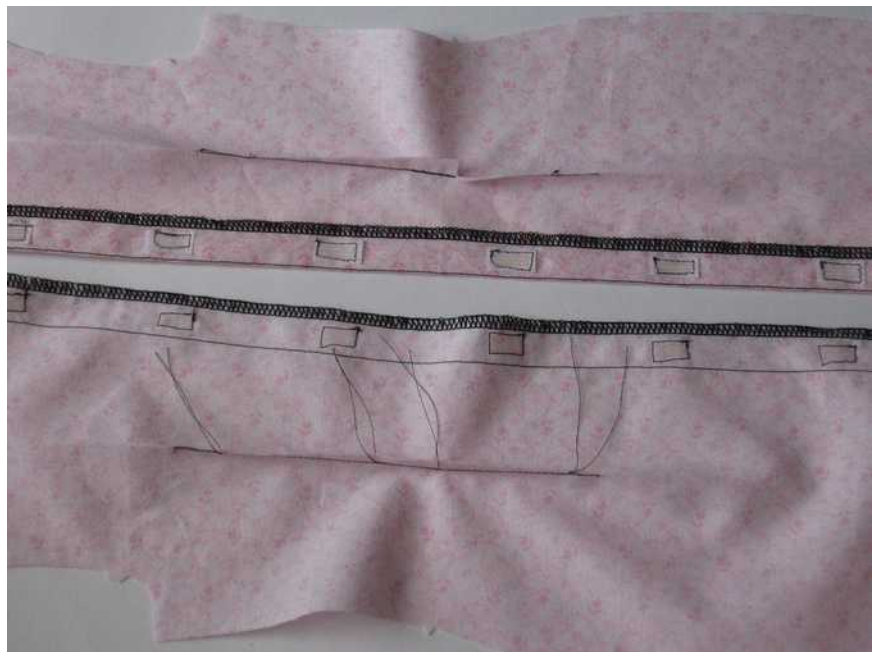


8. On the right side of the fabric, sew $\frac{3}{16}$ " by $\frac{3}{4}$ " (0.5 cm by 2 cm) pieces of hook and loop tape (Velcro) on both center back pieces at the locations marked on the pattern, with the hook side of the Velcro on one side and the loop side on the other.



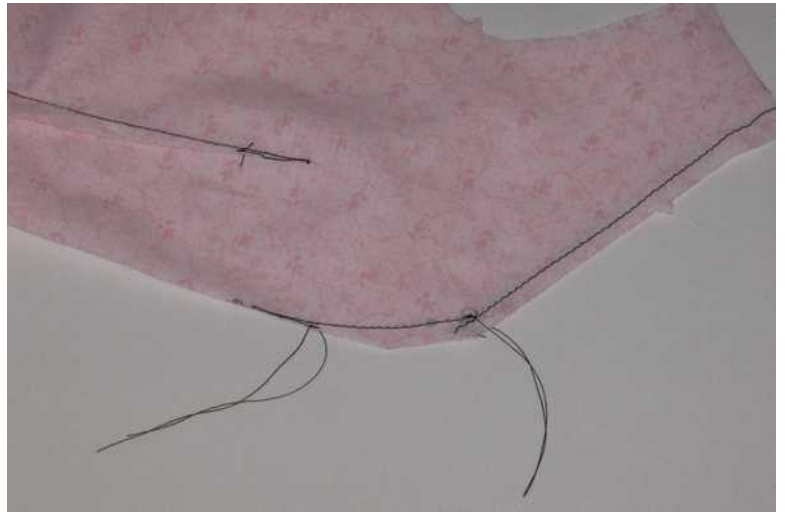
9. Sew the double-ended darts in both the front and back pieces. Start near the center and sew to the points, overlapping the stitches at the center of the darts.

At the center of each dart, clip to the stitching line. Press the darts toward the center of the dress.

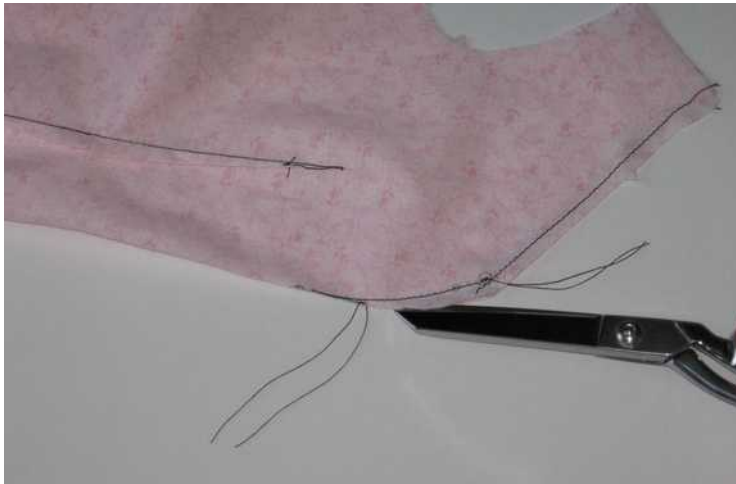


10. On the front piece, sew the curved dart at the center front neckline, backstitching exactly at the large dot and sewing to the point.

Note: All seam allowances are 1/4" (6 mm).



11. Cut as far as you can along the foldline of the dart. Press the cut seam allowances of the dart open and the lower part of the dart to one side.



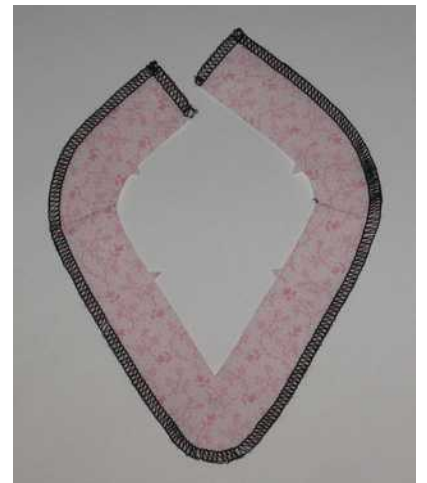
12. Sew the shoulder seams. Press them open.



13. Sew the shoulder seams in the facing pieces. Press them open. At center front, clip to the large dot.



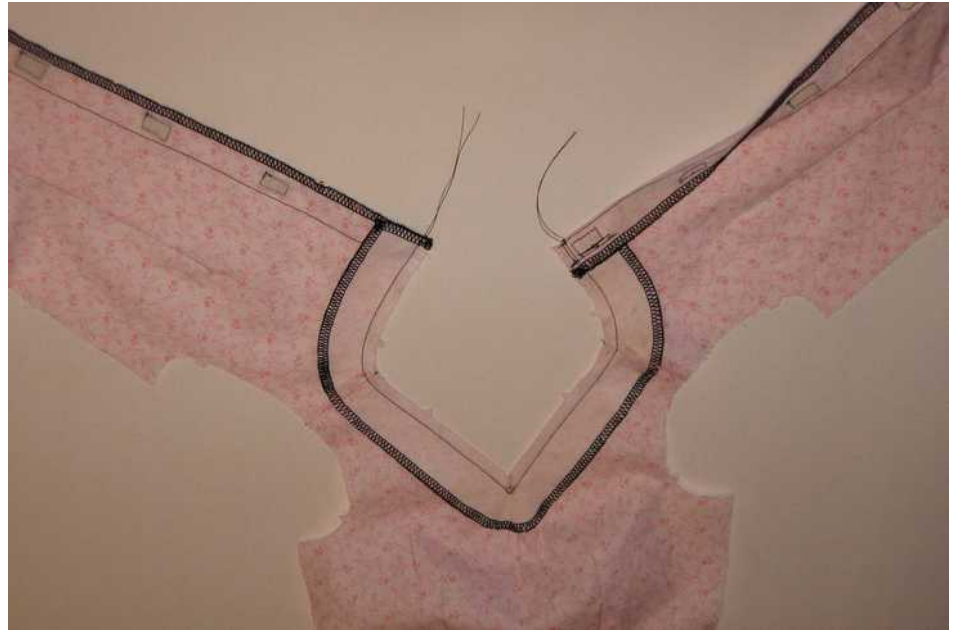
14. If desired, finish the back and outside edges of the facing.



15. With a 1/4" (6 mm) seam allowance, sew the short edge of the back left neck facing to the dress left back piece with right sides together. Press the seam toward the facing.



16. Fold the left back piece right sides together along the center back line and line up the notches in the dress and facing. Stitch the facing to the dress around the neckline.



17. Grade and clip the neckline seam allowance. Fold the facing to the inside and press, rolling the seam line just to the inside.

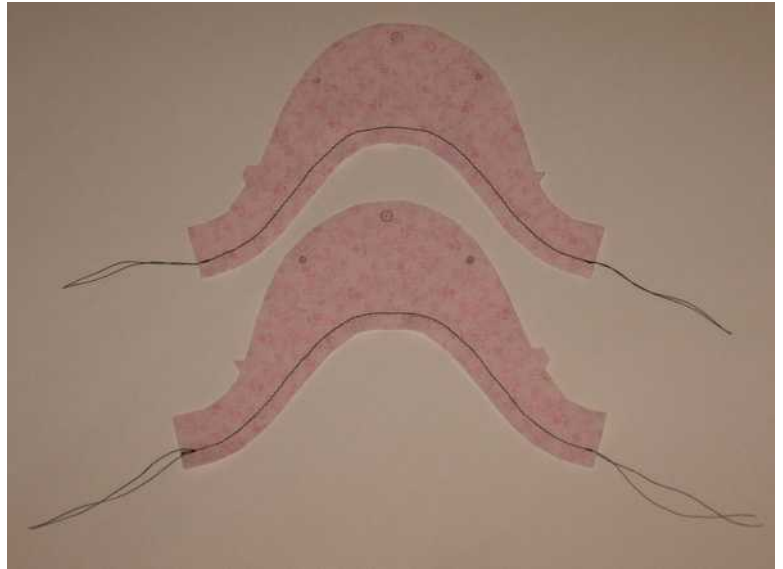


18. Edgestitch around the neckline 1/16" (1.5 mm) from the edge.

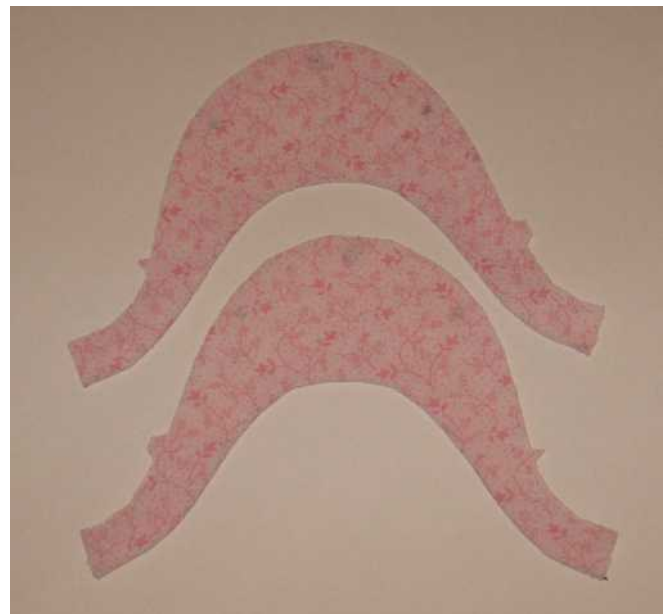
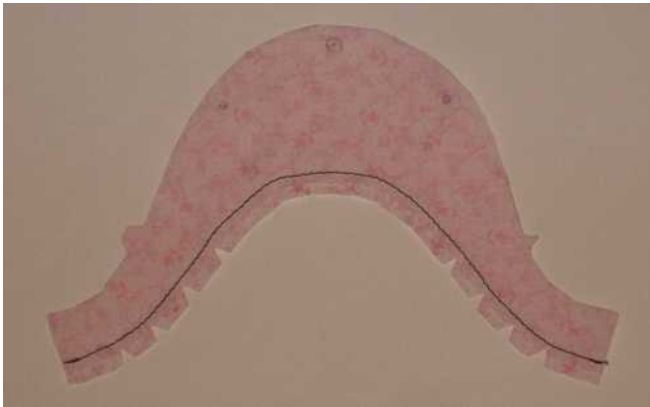
19. Sew the side seams. Clip into the seam allowances at the waist. Press the seams open.



20. With right sides together sew the inner and outer sleeve pieces together at the lower edges.



21. Grade, clip, and notch the seam allowances. Turn the sleeves right side out and press.



22. Open out and stitch the underarm seam of the sleeves. Press the seams open, then turn and press the sleeves with wrong sides together. Make sure you have turned them so you have a right and left sleeve.



23. Baste the raw edges of the sleeves together.



24. Edgestitch around the lower edge of the sleeves 1/16" (1.5 mm) from the edge.



25. Gather the sleeve caps between small dots.



26. Hand baste the sleeves into the armholes, then stitch the seam. Remove the basting stitches. If desired, trim the lower part of the sleeve seam between notches to 1/8" (3 mm) and finish the edge (not shown).



27. Flip the facing up out of the way. Gather the center front between small dots. Adjust the gathering stitches until it measures 1 3/8" (3.5 cm) between small dots. If you scaled the pattern down, multiply this measurement by your scale factor. For example, if you printed the pattern at 67%, this measurement would be $0.67 \times 3.5 \text{ cm} = 2.3 \text{ cm}$.



28. Cut a 2 1/2" (6.5 cm) long piece of ribbon or strip of fabric selvage (adjust the measurement if you scaled down the pattern). Turn under 1/4" (6 mm) on each end and hem. Pin or baste the ribbon centered over the gathering stitches on the wrong side of the dress. On the right side of the dress, stitch between small dots.



29. Hem the dress as desired, unfolding the left back out flat at center back.



30. Fold the left back to the inside along the center back line and topstitch $\frac{1}{4}$ " (6 mm) from the edge.



