

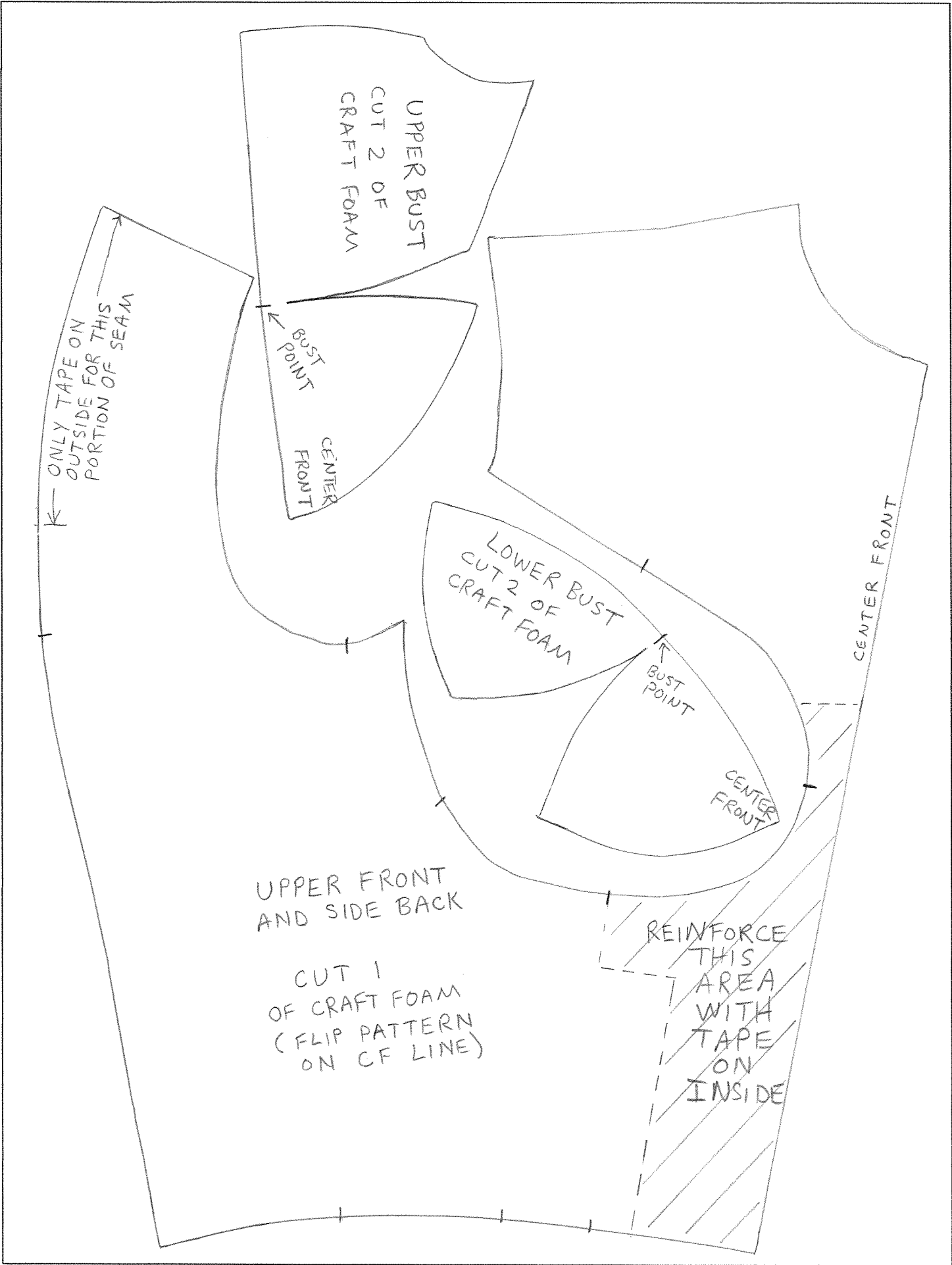
LOWER FRONT
CUT 1 OF
CRAFT FOAM
(FLIP PATTERN
ON CF LINE)

LOWER
SIDE BACK
CUT 2
OF CRAFT
FOAM

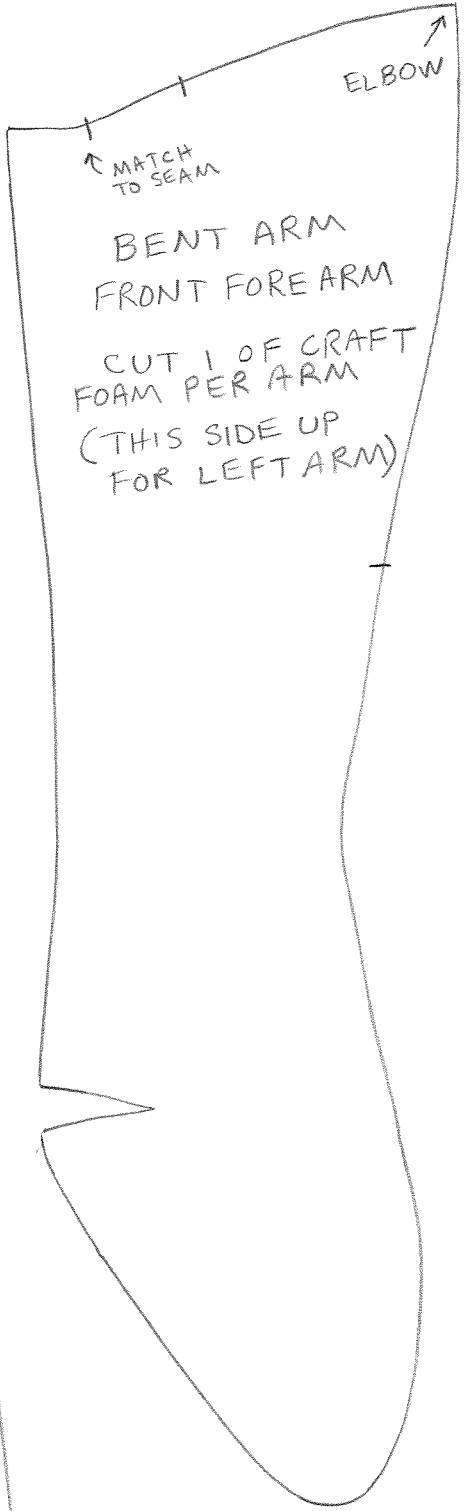
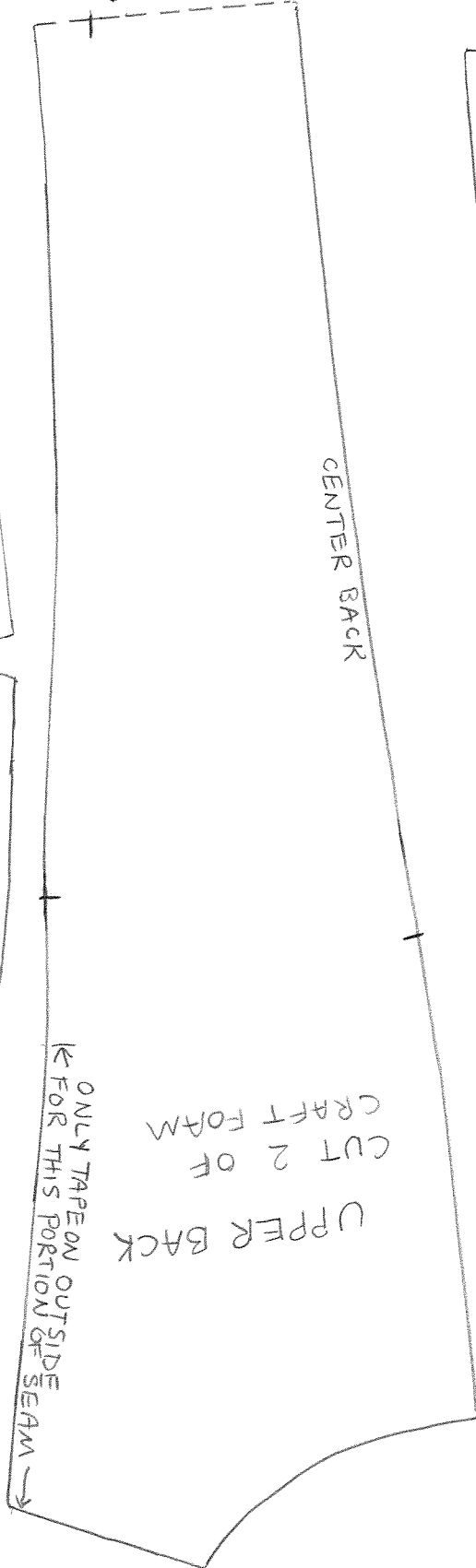
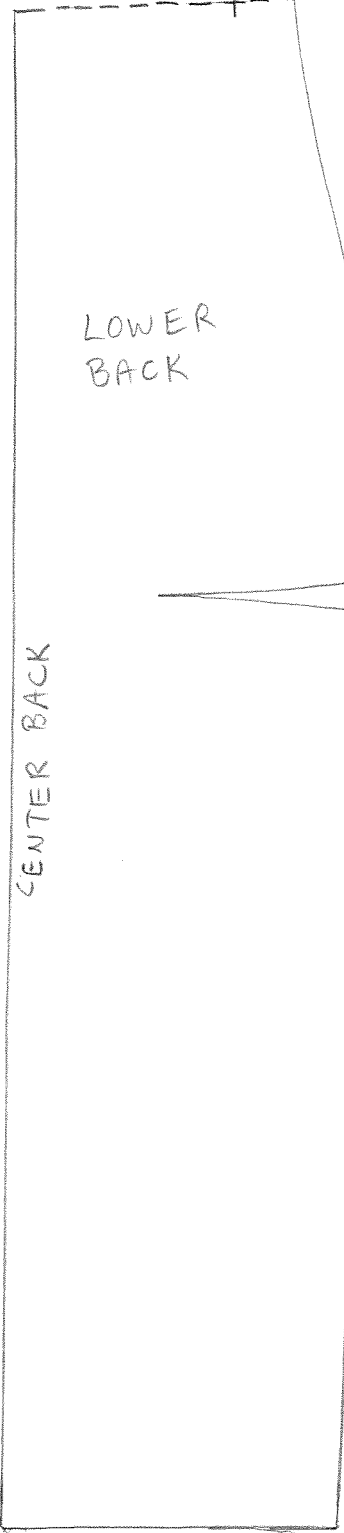
SIDE SEAM

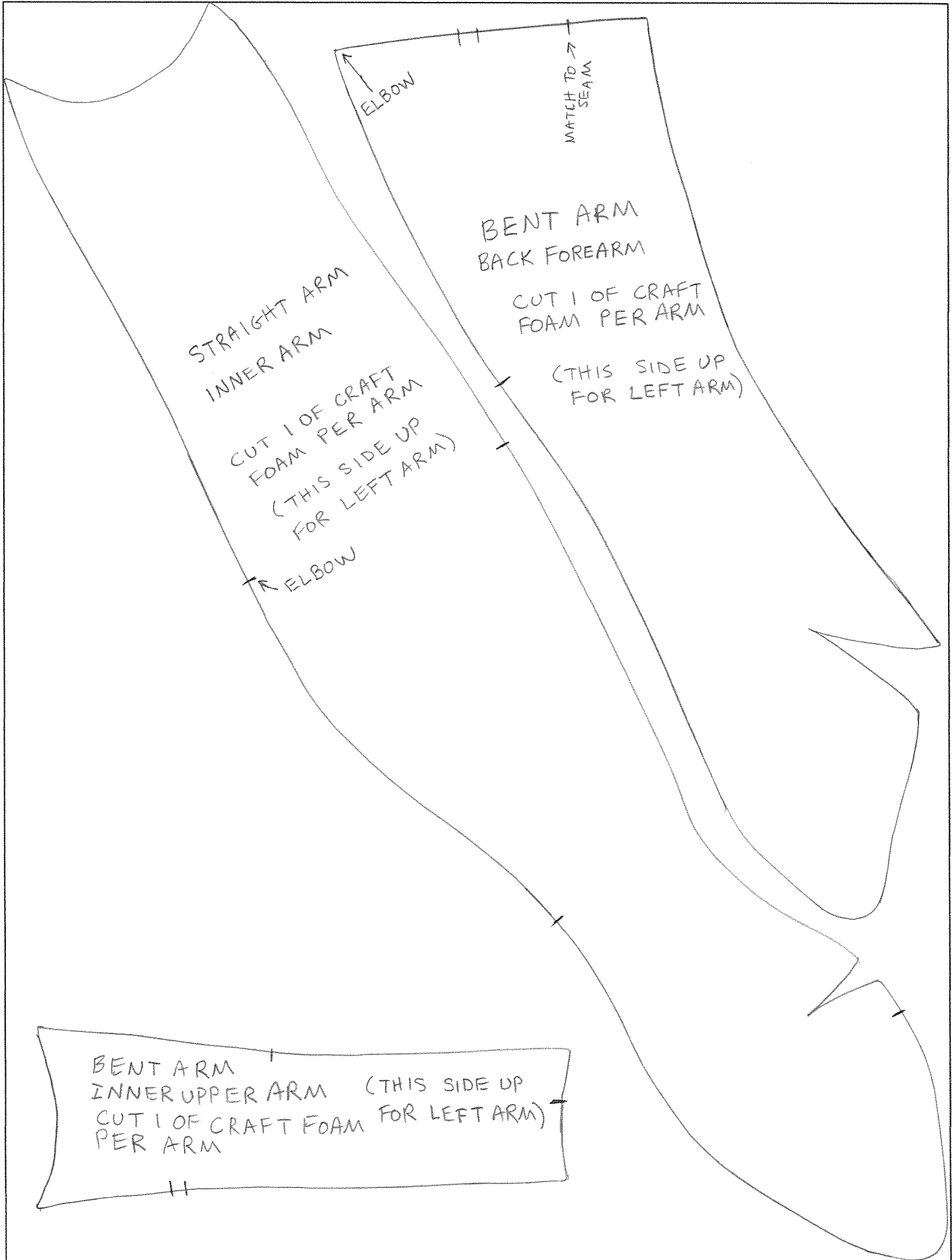
CENTER FRONT

SIDE SEAM



ATTACH TOGETHER





STRAIGHT ARM
INNER ARM

CUT 1 OF CRAFT
FOAM PER ARM
(THIS SIDE UP
FOR LEFT ARM)

ELBOW

BENT ARM
BACK FOREARM

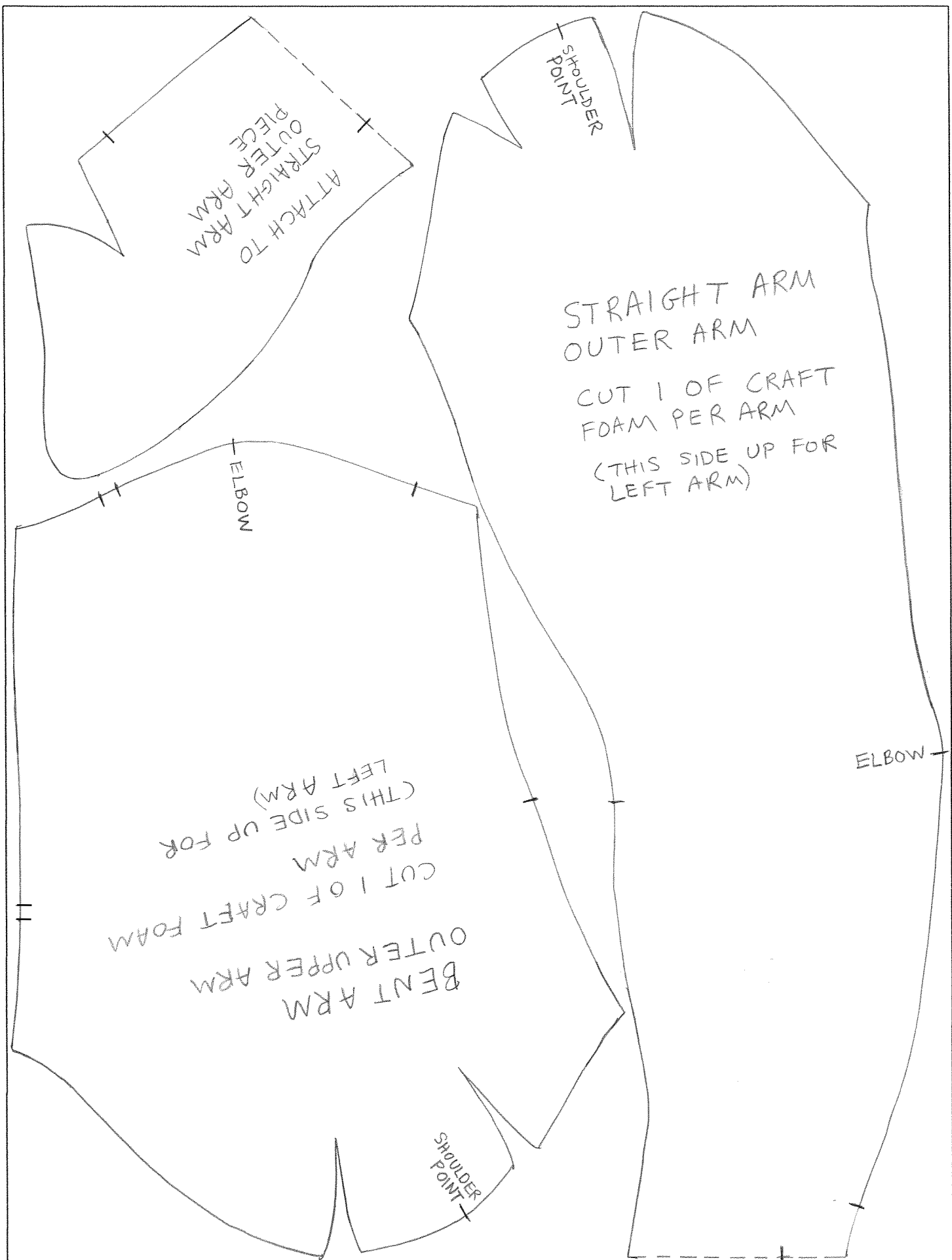
CUT 1 OF CRAFT
FOAM PER ARM

(THIS SIDE UP
FOR LEFT ARM)

ELBOW

MATCH TO
SEAM

BENT ARM
INNER UPPER ARM (THIS SIDE UP
FOR LEFT ARM)
CUT 1 OF CRAFT FOAM
PER ARM



ATTACH TO
STRAIGHT ARM
OUTER ARM
PIECE

SHOULDER
POINT

STRAIGHT ARM
OUTER ARM

CUT 1 OF CRAFT
FOAM PER ARM
(THIS SIDE UP FOR
LEFT ARM)

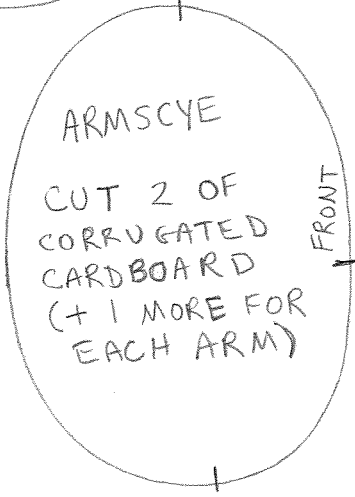
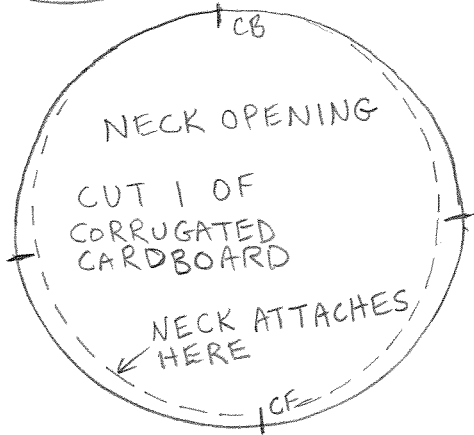
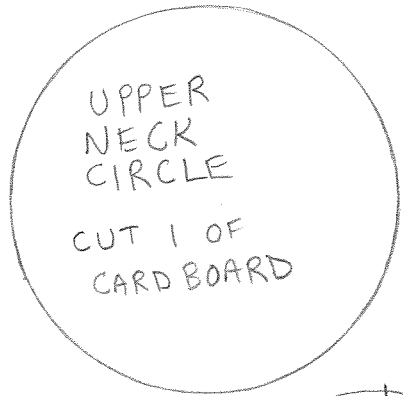
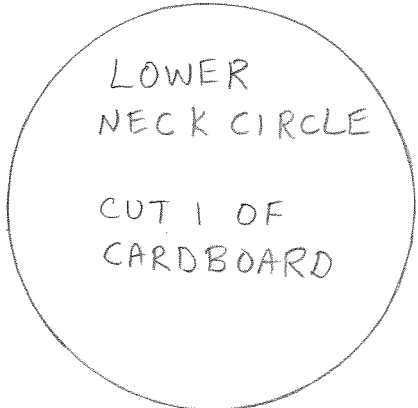
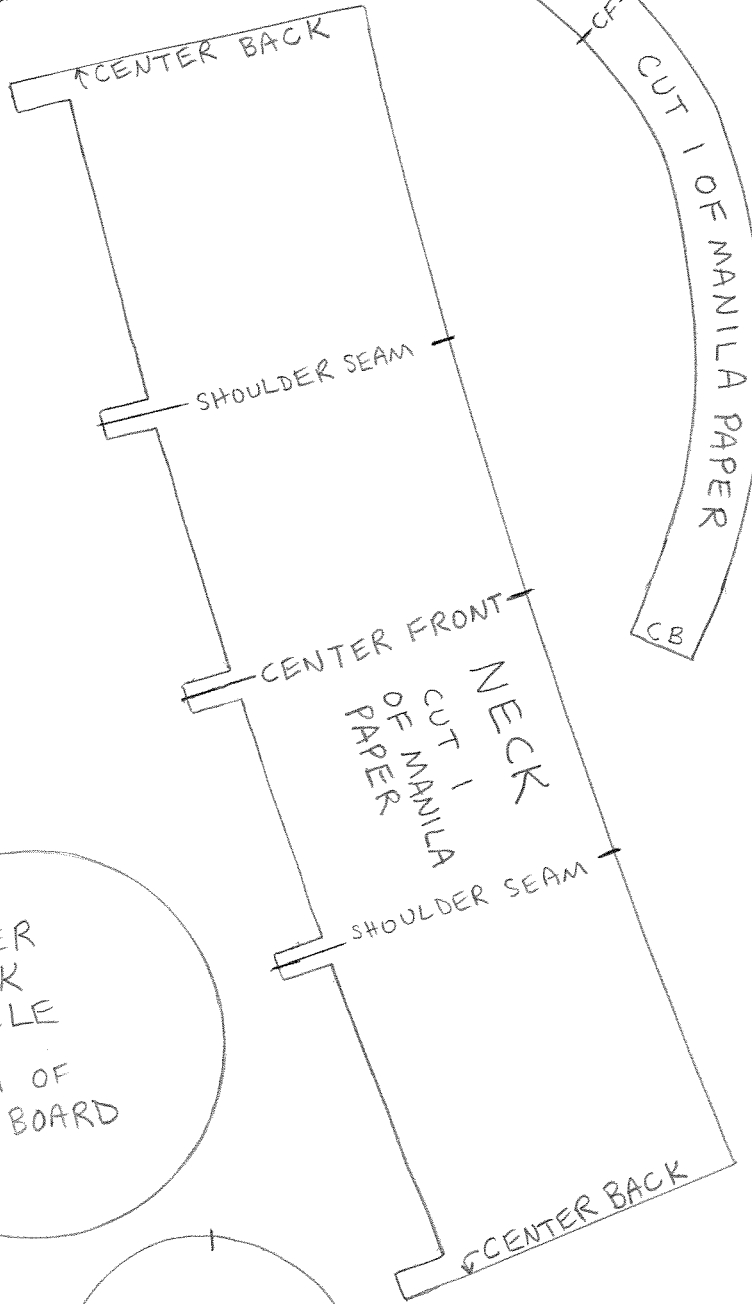
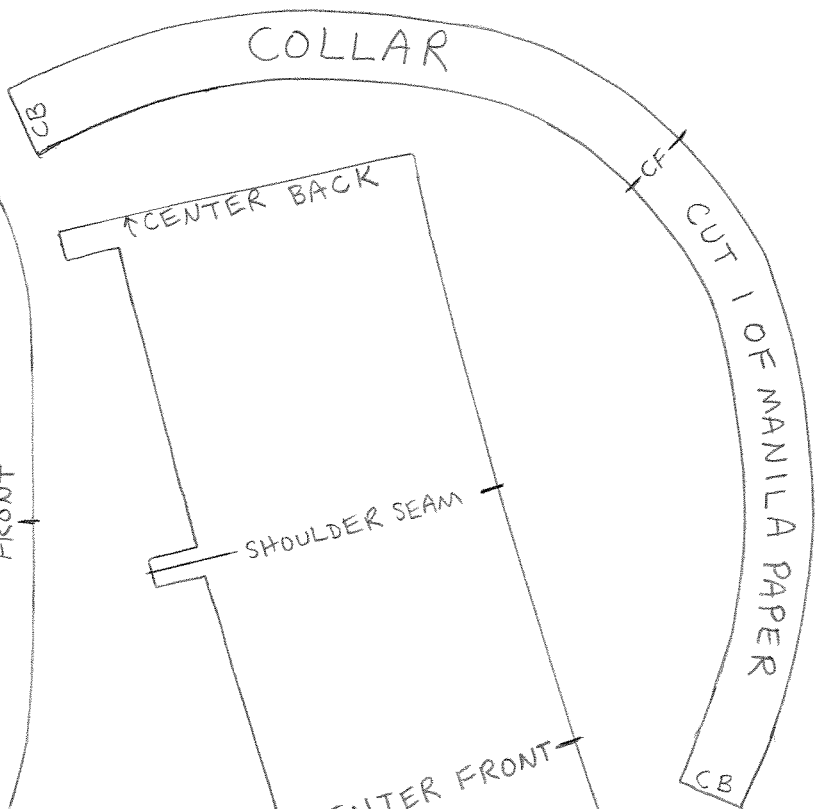
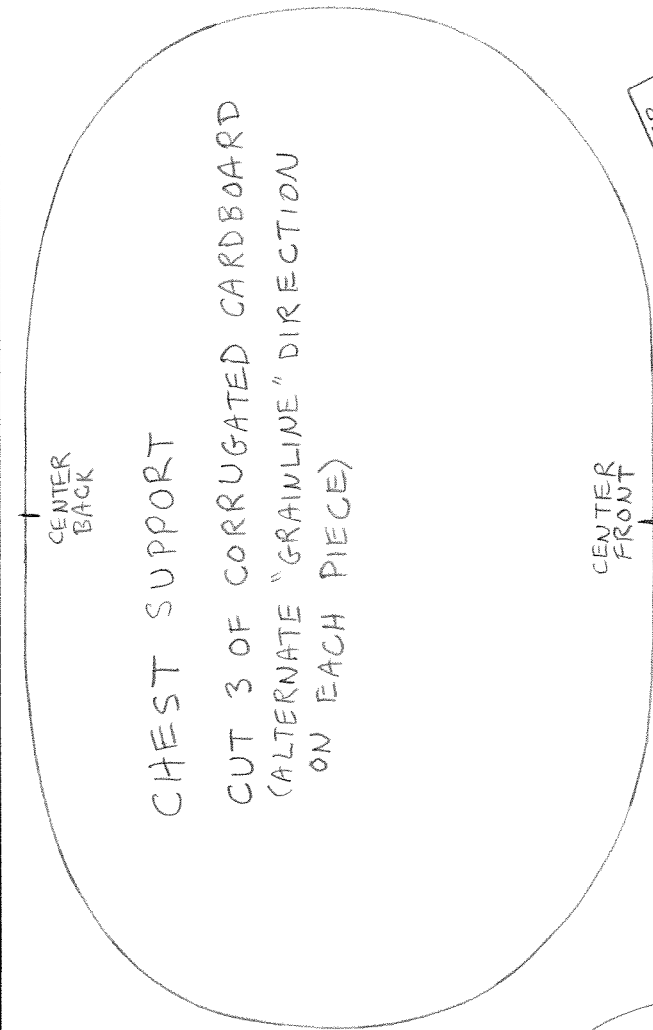
ELBOW

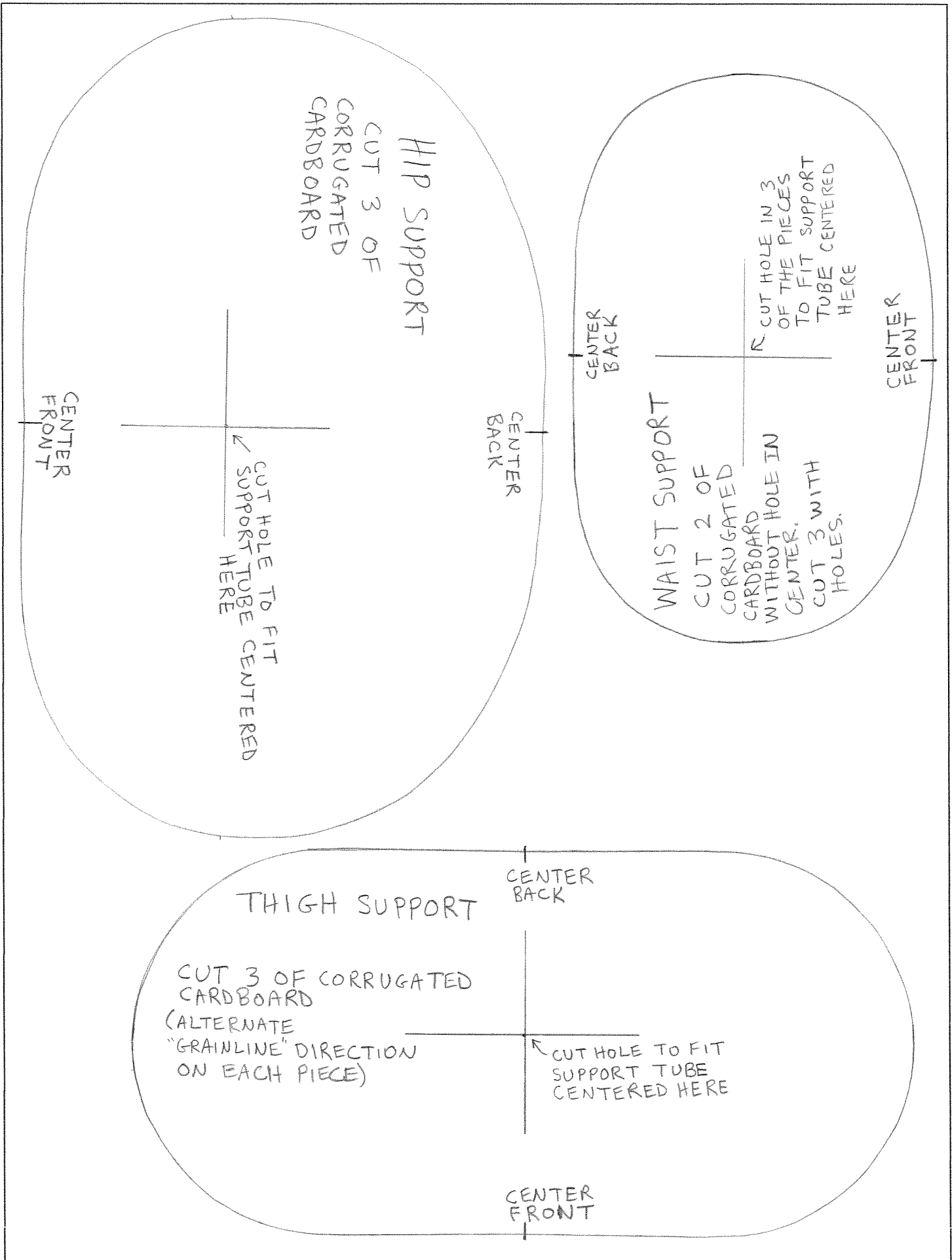
ELBOW

(THIS SIDE UP FOR
LEFT ARM)
PER ARM

CUT 1 OF CRAFT FOAM
OUTER UPPER ARM
BENT ARM

SHOULDER
POINT





HIP SUPPORT
CUT 3 OF
CORRUGATED
CARDBOARD

CENTER
FRONT

CUT HOLE TO FIT
SUPPORT TUBE
CENTERED
HERE

CENTER
BACK

WAIST SUPPORT
CUT 2 OF
CORRUGATED
CARDBOARD
WITHOUT HOLE IN
CENTER.
CUT 3 WITH
HOLES.

CENTER
BACK

CUT HOLE IN 3
OF THE PIECES
TO FIT SUPPORT
TUBE CENTERED
HERE

CENTER
FRONT

THIGH SUPPORT

CUT 3 OF CORRUGATED
CARDBOARD
(ALTERNATE
"GRAINLINE" DIRECTION
ON EACH PIECE)

CUT HOLE TO FIT
SUPPORT TUBE
CENTERED HERE

CENTER
BACK

CENTER
FRONT